

HEATZONE®

TCH250 Thaw. Cure. Heat.

Breakthrough in Technology.

Improved capability with patented **HEATZONE®** fluid distribution technology. Superior **THAW, CURE, HEAT** for any job. Delivers a blistering 250 MBH of heat with unparalleled uniformity thru 5 separate 600' (182m) zones. It **THAWS** more quickly, **CURES** more evenly, and saves a minimum of 24 gallons (91 liters) of fuel per day over its closest competitor.

IMPROVEMENTS MADE IN FUNCTION AND DESIGN

- Newly designed "series flow pattern" provides more flow for better heat transfer.
- Ease-to-use and newly designed Control box located at rear passenger side.
 - All controls in one place – for easier operator interface.
 - OFF-ON switch allows for untrained operator use.
 - Set temperature at HTF-returns for more accurate cold weather concrete curing.
 - Fuel gauge and low water alert are added to the control box for trouble shooting.
- Flow is increased through larger sized and shorter piping, resulting in faster thawing and used with available unit heaters – more warm air delivery.
- New Power/In-Power/out and free-wheeling feature for reel operation with dynamic brake.

Simply the best hydronic heater on the market!



HEATZONE®
A Division of Thawzall, LLC

www.thawzall.com

PERFORMANCE

THAW frozen ground	sq ft	3,000-6,000
	sq m	278
CURE concrete	sq ft	6,000
	sq m	550
	with accessories	sq ft
	sq m	1,670 max
FROST prevention	sq ft	9,000
	sq m	840
	with accessories	sq ft
	sq m	2,500 max
HEAT buildings	cu ft	400,000
	cu m	11,300
Input/Output	MBH*	280/234
Operating Range	°F	70-200
	°C	21-93
Operating Pressure	psi	1-5
Fuel Consumption (max)	gph	1.75
	lph	6.62
Run Time	days	3+
Pump Capacity	gpm/gph	30/1800
	lpm/lph	110/6,800

DIMENSIONS & CAPACITIES

L x W x H	in	170 x 84 x 97
	cm	431 x 213 x 246
Weight w/fuel & fluid	lbs	5,600
	kg	2,540
Optional Generator	lbs	310
	kg	140
Fuel Capacity	gal	160
	liters	600
HTF (Heat Transfer Fluid)	gal	122
	liters	460

SPECIFICATIONS

One - 1/2 hp Pump	Closed Loop Centrifugal	
Hose Length	ft	3,000
	m	915
Electrical, GFI	1) 20 amp x 120 vac	
	HTF Pumpability	°F
	°C	-62
Fuel	Winter blend diesel or #1 fuel oil	
Hitch Choices	Forged, Stamped, or Pintle	
Diesel Generator	7.0 KWH	
	Liquid Cooled	



106 Donovan Drive • Alexandria, MN 56308
Ph: 320-759-1588 • Fax: 320-759-1583
Toll Free 888-757-3545

HEATZONE[®] TCH250



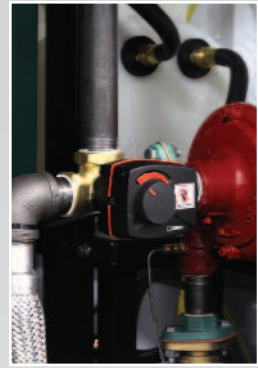
Series Flow Pattern—more flow.



Top Draft Boiler with Beckett Burner and GeniSys™ Controller.



Power/In, Power/Out and Free Wheel.



E.C.V for more precise concrete cure temperature.



Patented HeatZone® Flow Distribution Technology.



Electronic temperature monitor at H.T.F returns.



Single operator interface — everything at your fingertip!



106 Donovan Drive • Alexandria, MN 56308
Ph: 320-759-1588 • Fax: 320-759-1583
Toll Free 888-757-3545

www.thawzall.com