

OVER 50 YEARS OF SERVICE TO THE INDUSTRY

Broce Broom

THE  LEADER
250 Series



Visit our web site at
www.brocebroom.com

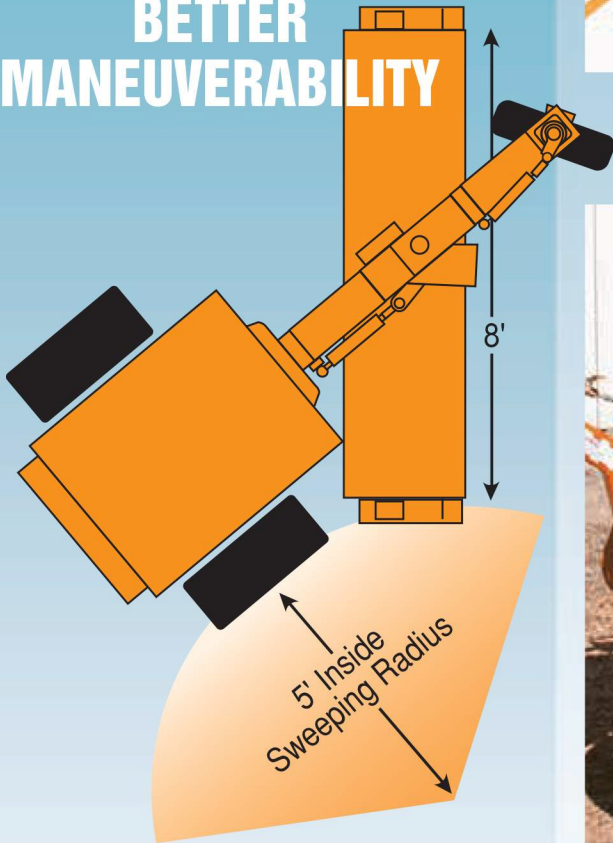
CALL TOLL FREE

866-579-2488 - Sales
877-227-8811 - Parts & Service

Kubota
BB-250-B

**ASK YOUR
NEAREST BROCE
DEALER FOR A
DEMONSTRATION
TODAY!**

IN TIGHT PLACES BROCE BB250 OFFERS BETTER MANEUVERABILITY



BB-250 POWER PLANTS

- Kubota 24 HP diesel or
- Water Cooled
- 12 Volt Electrical

Broce offers a trailing type broom function that allows full contact on the road surface without manual adjustments. The brush, as a standard feature, has hydraulic float, plus down pressure for extra heavy sweeping.



STANDARD HEAVY DUTY SHOCK ABSORBER

Shock absorber provides smoother brush operation and longer brush life.

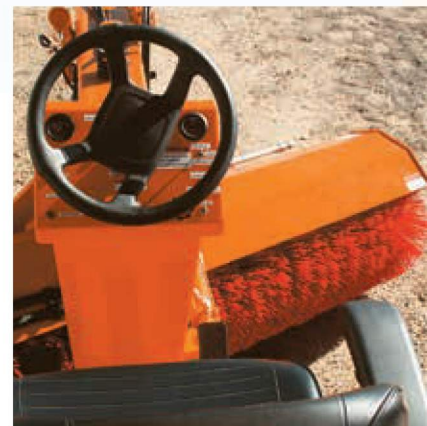
HITCH WARNING ALARM SYSTEM

When hitch is folded down for towing, red light flashes to remind you to disengage rear wheel drive hubs.



100% BRUSH VISIBILITY WHILE SWEEPING

Operator has full view brush-to road contact at all times.





KEEP DUST TO A MINIMUM FOR CONVENIENCE & SAFETY

- 72 gallon capacity
- 2.1 gpm electric pump
- 8 spray nozzles
- galvanized spray bars
- suction strainer filter
- back flow valve

WATER SPRAY SYSTEMS



DUST CONTROL WHEN IT'S NEEDED

SINGLE BRUSH DRIVE MOTOR

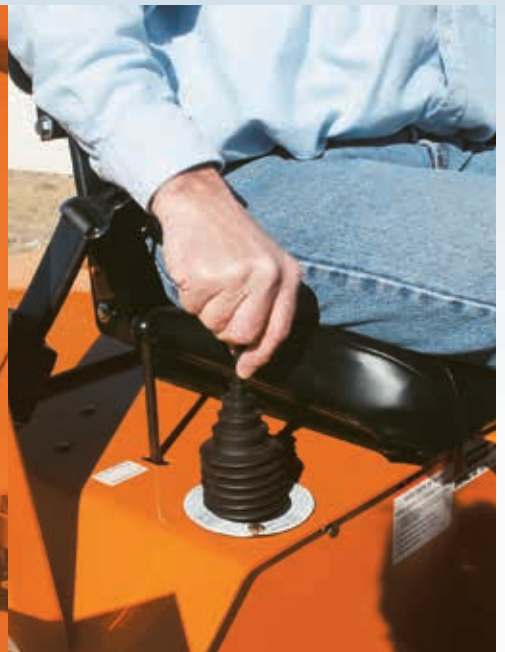
- Danfoss high torque
- 192 brush RPM
- Easy brush replacement

HYDROSTATIC FOOT CONTROL

- To move your Broce Broom forward or reverse - simply move the rocker pedal in the direction you want to go.

JOYSTICK CONTROL- PLUS EASY ACCESS FROM OPERATORS STATION

- Joystick operates brush raise, lower, float, down pressure, along with right and left brush swing.



BROCE BROOM MODEL BB-250-B SPECIFICATIONS

Standard Equipment on All Units

- Safety orange paint
- 8' steel core with 6 3/8" x 24" poly flat wafers
- Electric over hydraulic brush lock
- Certified roll-over protection structure and canopy ISO 3471 Compliant
- Seat Belts ISO 6683 Compliant
- Power steering
- 2-wheel hydraulic drum brakes with manual parking brake
- 16 gauge core cover
- 72 gallon water sprinkler system
- 2" ball tow hitch with surge brakes and tow lights
- Hydraulic tow hitch
- Gauge package includes: oil, water, alternator, fuel and hour meter
- P185/70R14" radial tires
- Sauer - Danfoss hydrostatic
- Wheel Drive - hydraulic motors
- Single direct drive motor on brush drive
- Broom controls - two spool joystick valve with adjustable down pressure and float position
- Steering - orbital type steering w/dead steer capabilities
- Padded seat with arm rests and seat belt
- Reverse alarm

Optional Equipment

- 6' core (in lieu of std. 8')
- 2 5/16" ball hitch or pintle eye hitch
- Amber beacon light
- Amber strobe light
- Front work lights and rear tail lights
- Rear work lights (2 single beam)
- Hitch disconnect warning light
- Paint (other than standard safety orange)
- Engine shutdown safety system
- Windshield
- Traffic horn

THE HYDRAULIC TOW HITCH ON EVERY BB-250 IS NOW STANDARD WITH NO CRANKING, MAKING IT EASIER TO TRANSPORT THE MACHINE TO THE JOB SITE



When the BB-250 is being towed, the coupler at the end of the hitch will activate the mechanical brakes anytime the driver of the towing vehicle applies his brakes.

| | |
|---------------------------------------|------------------------------------|
| Dimensions | Height 7'10" Width 8' Length 12'6" |
| Engine - Kubota or Caterpillar diesel | Kubota 24 HP - Tier 4 |
| Machine Weight | 3,000 lb. |
| Weight w/Water System | 3,600 lb. |
| Broom Size | 6 3/8" ID x 24" OD |
| Broom Length | Full 8' (Optional 6') |
| Broom Drive | Single Hydraulic Motor |
| Brush Speed | 192 RPM |
| Broom Angle | Full 40 Degrees (both ways) |
| Steering | 60 Degrees (both ways) |
| Outside Turning Radius | 10' 9" |
| Inside Sweeping Radius | 5' |
| Fuel Capacity | 9 U.S. gallon |
| Hydraulic Oil Capacity | 15 U.S. gallon |
| Speed | 0 to 10 mph |

Distributed by:

Broce Broom

Broce Manufacturing Co. • 205 E. Main • Norman, OK 73069-1304

Sales: 866-579-2488 • Parts & Service: 877-227-8811